



AIA

Eastern
Illinois
Chapter



A Chapter of The American Institute of Architects

CENTENNIAL PARK

Project Location: MUNSTER, INDIANA
Architect: LINDEN GROUP INC.
Contractor: LARSON-DANIELSON
Client: TOWN OF MUNSTER



Project Description:

Brief Description:

This project development includes approximately 230 acres of a Brownfield site (landfill). The redevelopment incorporates reshaping the existing 12-acre lake, construction of four structures, parking, path system, various landscaping amenities, and a nine-hole golf course. The four structures include a Clubhouse/Social Center, Amphitheater, Pergola, and Golf Pavilion.

CLUBHOUSE:

The Clubhouse/Social Center is a two-level 23,000 s.f. building with multipurpose meeting rooms, catering kitchen, grill restaurant, grill kitchen, pro shop, and cart storage. The clubhouse is cut into the hillside between the lake and the golf course bridging a 45-foot elevation change between the first tee and the lake.

The architecture takes simple gable roof forms and connects them with flat planted green roofs. The building is anchored to the landscape with natural weathered face limestone from Lanon, Wisconsin. The stone blends weathered and split faces and mixes natural colors of grey, buff, and rusty orange.

Regular and elongated shapes provide a beautifully textured surface with nice shadow lines. Above the Lanon stone the building materials are refined to Alaskan cedar siding, brick, glazing, and metal siding. The dark toned brick with expressed iron spots was selected to offset the light colored stone.

Other exterior features include a 100% recycled synthetic shake roof shingle and a decorative steel railing of the balconies designed to simulate natural grasses throughout the park.

GOLF PAVILION:

Microtubules convert methane gas from this former landfill site into clean, usable energy.

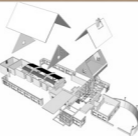


Jury Comments:

"...Well detailed project from start to finish. Great project with benefit of good sustainable effort. Site and building design well thought out. ...Owner and client are commended for making an eyesore into a wonderful community asset."



"...Beautiful design, simple forms – logical circulation flow. Excellent amenities around the lake! Wonderful materials blended with nature. More than just golf! Interiors and exterior are unified."



"...Wow! This is what architecture should be. Simple roof shapes borrowing from area's agricultural past."



"Excellence In Design"



2008
DISTINGUISHED
BUILDING AWARDS